

# Lowrance 2010 Compact Fishfinders



**LOWRANCE**<sup>®</sup>

[www.lowrance.com](http://www.lowrance.com)

A Navico brand – Leader in Marine Electronics

# Lowrance Compact Fishfinders

For limited boat space, look to these finders for a true performance edge to find fish like a pro, and affordably...packed with legendary Lowrance sonar features:

- Astounding LCD screen visibility in the brightest sunlight with monochrome FSTN, and TFT transfective color displays with best-in-class outdoor color viewing
- High-sensitivity receiver design enhances fish target acquisition and separation
- GRAYLINE® or COLORLINE™ feature vastly improves target definition and defines bottom composition
- FishReveal™ enhanced display feature exposes fish targets hidden in cover and clutter (monochrome models)
- Adjustable Ping Speed with HyperScroll™ for high-speed sounding
- FlashGraf™ combines scrolling sonar graph with LCD flasher for two ways of finding fish in one screen display
- FasTrack™ vertical bar flasher feature shows real-time returns and strength of echos
- ASP™ Advanced Signal Processing feature automatically adjusts sensitivity for the best, clutter-free picture possible
- Full one-year warranty



## X67c Fishfinder with Brighter Color Viewing

Enjoy dazzling 256-color fishfinder performance with incredible visibility in sunlight, now enhanced with a brighter screen, at an attractive price!

- New 3.5 in./8.9 cm diag. 320Vx240H pixel, active matrix TFT display for exceptional sonar detail is now even more visible in sunlight
- White LED backlit screen and keypad
- 800 watts peak-to-peak power/100 watts RMS, depths to 600 ft./183 m
- High-speed 200kHz Skimmer® transducer with built-in temp sensor and up to 60° of wide-scan fish detection

## X67c IceMachine™ Portable

The X67c in a self-contained and ready-to-go ice fishing anytime portable.

- Vivid, bright, active display viewing even in temperatures down to -20°F/-29°C
- Sonar graph or color LCD flasher with battery status modes
- Includes rugged waterproof soft case, 12 vDC/7 amp sealed battery with charger, adjustable transducer outrigger bracket and weighted 200 kHz bullet ice transducer



## M68c<sup>S/Map</sup> Fishfinder/Mapping GPS with Brighter Color Viewing

A favorite for smaller boats and budgets, with precision Lowrance fishfinding and GPS navigation performance with enhanced color for sunlight viewing.

- Same display and fishfinder features of the X67c
- Precision GPS+WAAS receiver with built-in antenna
- Built-in Lowrance cartography of U.S. lakes, rivers and coastal waters with nav aids, plus major highways/cities
- Saves up to 1,000 waypoints to mark fishing spots with a choice of 42 icons
- Saves up to 100 retraceable plot trails

## M68c<sup>S/Map</sup> Deep Water

Features special Skimmer® transducer with temp sensor for deeper salt water or downrigger tracking to depths of 800 ft./244 m.



### X52 Fishfinder with NMEA 2000®

A perennial best-buy favorite in a true fishfinder performer that's nicely sized and nicely priced to match.

- High-contrast 4 in./10.2 cm diag. Film SuperTwist display has 16-level grayscale definition with 240Vx160H pixel resolution and superior viewing in direct sunlight
- Backlit screen and keypad
- 1,500 watts peak-to-peak power/188 watts RMS, depths to 800 ft./274 m
- High-speed 200kHz Skimmer® transducer with built-in temp sensor and up to 60° of wide-scan fish detection
- Red connector port for NMEA 2000® networking



### X59 DF 50/200 kHz Fishfinder with NMEA 2000®

The dual-frequency coastal model of the X52 for deeper salt water or downrigger tracking.

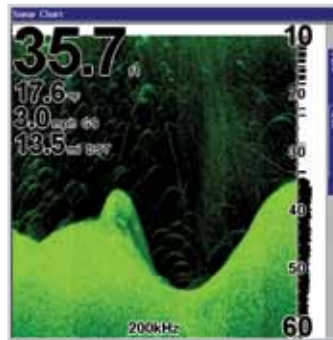
- High-contrast 10.2 cm/4 in. diag. Film SuperTwist display has 16-level grayscale definition with 240Vx160H pixel resolution and superior viewing in direct sunlight
- Backlit screen and keypad
- 2,400 watts peak-to-peak power/300 watts RMS, depths to 457 m/1,500 ft. @ 50 kHz
- High-speed dual-frequency 50/200kHz Skimmer® transducer with built-in temp sensor
- Red connector port for NMEA 2000® networking\*



### X50 DS 83/200 kHz Fishfinder

A versatile and innovative fishfinder with dual-search 83/200 kHz sounding for excellent shallow and deep water fish target marking.

- Dual-search Skimmer® transducer with built-in temp sensor and up to 120° of wide-coverage fish detection @ 83 kHz
- High-contrast 4 in./10.2 cm diag. Film SuperTwist display with 4-level grayscale, 240Vx160H pixel resolution and superior viewing in direct sunlight
- Screen backlighting
- 1,500 watts peak-to-peak power/188 watts RMS, depths to 1,000 ft./305 m



X67c offers a palette of multiple color display modes to match water conditions, angler preference light levels for viewing and exposing fish targets.



Grayline® (Colorline™ on X67c) helps separate fish and important structure from the actual bottom. Also, the width of the lighter band below bottom distinguishes between hard (wider band) and soft bottoms (narrower band).



FasTrack™ displays flasher-style sonar returns in a narrow vertical column at the far right of the sonar screen. Especially useful for stationary fishing – at anchor or on ice.



### LST-3800 In-Dash Digital Depth/Temp

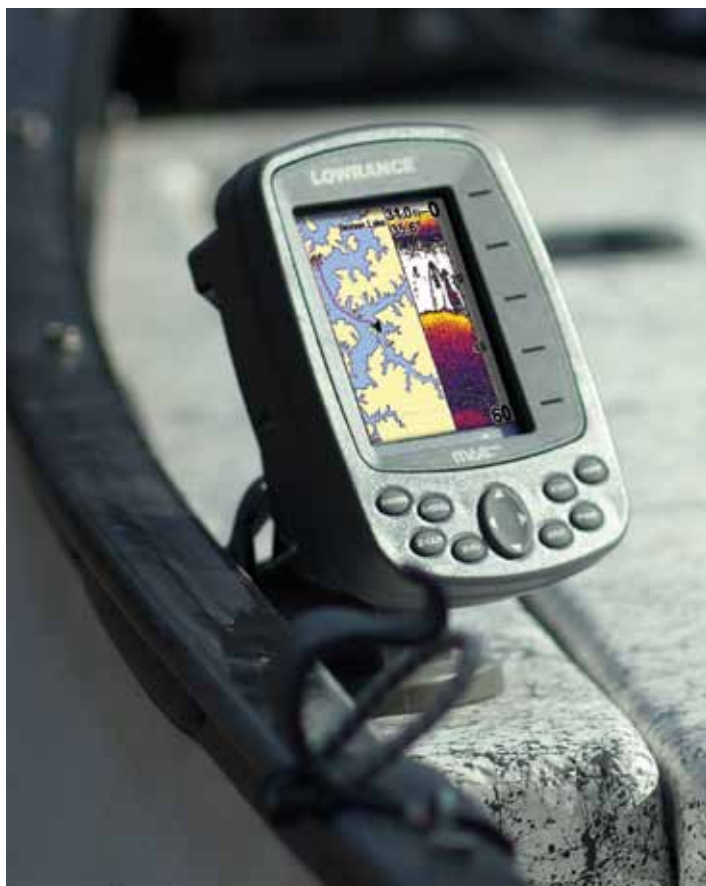
Reliability, accuracy and simplified operation mark this digital depth gauge with water temp readings. Ideal for inland and in-shore coastal boats.

- High-contrast dot matrix display with advanced white LED backlighting
- 200 kHz Skimmer® transom-mount transducer with built-in temp sensor
- Depths to 700 ft./213 m
- Shallow and deep depth alarms
- Temp readings to nearest 0.1° F
- Fits standard 2-1/8 in./55 mm diameter hole

## Fishfinder Detail



	M68c	X67c	X52	X59 DF	X50 DS
<b>Display</b>	3.5 in./8.9 cm 256-color Active Matrix TFT	3.5 in./8.9 cm 256-color Active Matrix TFT	4 in./10.2 cm Film SuperTwist	4 in./10.2 cm Film SuperTwist	4 in./10.2 cm Film SuperTwist
<b>Resolution</b>	320V x 240H (102,400 pixels)	320V x 240H (102,400 pixels)	240V x 160H (38,400 pixels)	240V x 160H (38,400 pixels)	240V x 160H (38,400 pixels)
<b>Backlighting</b>	White LED Screen - Keypad	White LED Screen - Keypad	White LED Screen - Keypad	White LED Screen - Keypad	Incandescent Screen - Keypad
<b>Power</b>	800W 100W RMS	800W 100W RMS	1,500W 188W RMS	2,400W 300W RMS	1,500W 188W RMS
<b>Frequency</b>	200 kHz	200 kHz	200 kHz	50/200 kHz	83/200 kHz Dual-Search
<b>Depth</b>	600 ft./183 m 800 ft./244 m Deep Water Pack	600 ft./183 m	600 ft./183 m	1,500 ft./457 m w/50 kHz	1,000 ft./305 m w/83 kHz
<b>Operating Voltage</b>	10-17 vDC	10-17 vDC	10-17 vDC	10-17 vDC	10-17 vDC
<b>Water Temp</b>	Standard (w/select transducers)	Standard (w/select transducers)	Standard (w/select transducers)	Standard (w/select transducers)	Standard (w/select transducers)
<b>Key Features</b>	COLORLINE®, ASP™, Split- Screen Zoom, HyperScroll™	COLORLINE®, ASP™, Split- Screen Zoom, HyperScroll™	GRAYLINE®, ASP™, Split- Screen Zoom, HyperScroll™, FishReveal™, NMEA 2000®	GRAYLINE®, ASP™, Split- Screen Zoom, HyperScroll™, FishReveal™, NMEA 2000®	GRAYLINE®, ASP™, Split- Screen Zoom, HyperScroll™
<b>Alarms</b>	Deep/Shallow/Fish	Deep/Shallow/Fish	Deep/Shallow/Fish	Deep/Shallow/Fish	Deep/Shallow/Fish
<b>Speed/Distance</b>	Optional	Optional	Optional	Standard (w/select transducers)	None
<b>Case Size</b>	4.3 in./10.8 cm W 5.8 in./14.7 cm H 2.5 in./6.4 cm D Sealed and waterproof	4.3 in./10.8 cm W 5.8 in./14.7 cm H 2.5 in./6.4 cm D Sealed and waterproof	5.4 in./13.6 cm W 5.2 in./13.2 cm H 2.6 in./6.6 cm D Sealed and waterproof	5.4 in./13.6 cm W 5.2 in./13.2 cm H 2.6 in./6.6 cm D Sealed and waterproof	4.3 in./10.8 cm W 5.8 in./14.7 cm H 2.5 in./6.4 cm D Sealed and waterproof



Model	Part
X67c with 200 kHz Skimmer® transducer	000-0110-502
X67c no transducer	000-0110-512
X67c IceMachine portable	000-0110-542
M68c S/Map with 200 kHz Skimmer® transducer	000-0116-032
M68c S/Map Deep Water with 50/200 kHz Skimmer® transducer	000-0116-072
M68C S/Map no transducer	000-0116-052
X52 with 200 kHz Skimmer® transducer	000-0110-612
X59 DF with 50/200 kHz Skimmer® transducer	000-0110-632
X50 DS with 83/200 kHz Skimmer® transducer	000-0110-68
LST-3800 Depth/Temp gauge with 200 kHz Skimmer® transducer	000-0047-94